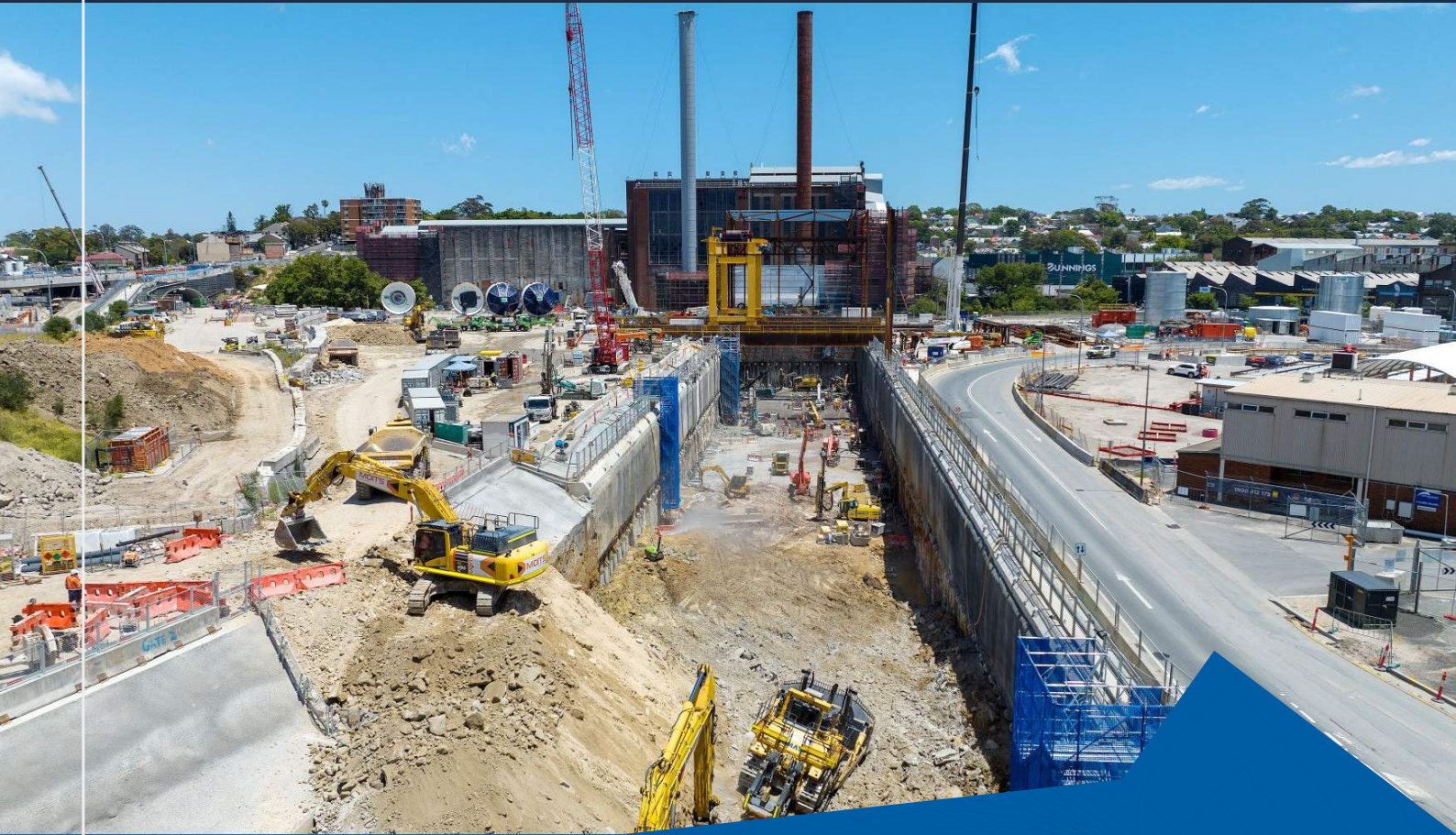


Central Tunnelling Package (CTP)



Project Description

The Sydney Metro West Central Tunnelling Package (CTP) is the design and construction of 11km of twin metro tunnels and station box excavation connecting The Bays Precinct and Sydney Olympic Park.

The works include tunnelling through complex geology, underground cavern excavation, and station box construction at The Bays, Five Dock, Burwood, North Strathfield, and Sydney Olympic Park.

Clients

Acciona Ferrovia Joint Venture

JAGCON Group Role

JAGCON Group worked with Acciona Ferrovia Joint Venture (AFJV) providing project management services, expert advice on constructability & senior engineers throughout the lifecycle of the project.

Project Delivery Roles:

- Tunnel Manager
- Interface and Handover Manager
- Senior Project Engineers
- Project Engineer
- Subject Matter Expert

Project Services:

- Planning & Constructability
- Project Management
- Value Engineering
- Claims & Variations Assistance
- Contract Administration
- SME Reviews
- Strategic Advice
- Ventilation

Project Value

\$2.0 Billion

Sector

Tunnelling, Rail, Transport, Infrastructure, Major Civil Works, Major Projects

